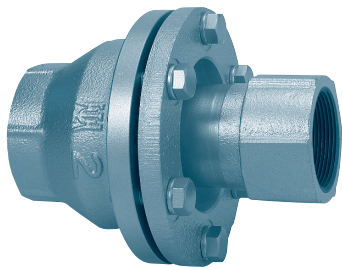
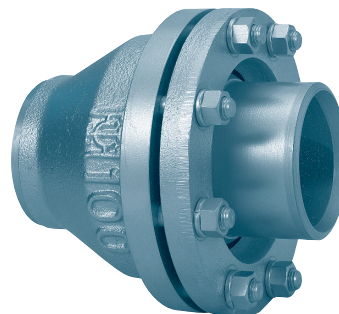


**Ball
type**

Type J102 Ball Joint

Complies with SHASE-S 007

Size 20—50



Size 65—300

Features

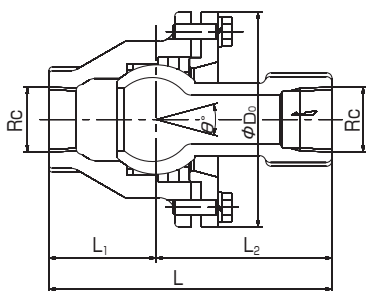
- Complies with SHASE-S007 standard.
- Absorbs large movement without requiring large space.
- Special packing allows long term use.
- Chromium plating on the ball prevents rust which could damage packing.
- Simple construction results in an airtight feature.

Remark SHASE : The Society of Heating, Air-Conditioning and Sanitary Engineers of Japan.

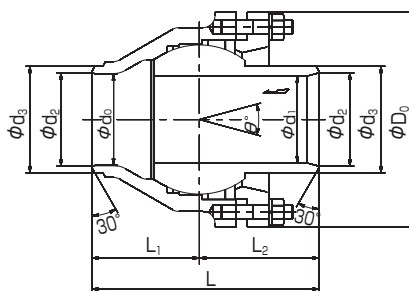
Specifications

Size	20—300
Max. allowable pressure	2.0MPa
Hydrostatic pressure	4.0MPa
Max. allowable temperature	220°C
Fluid	Steam, water, air and oil
Connection	Size 20—50 : screwed, size 65—300 : welded

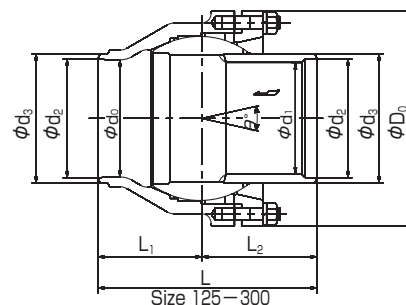
Construction



Size 20—50



Size 65—100



Size 125—300

Part name	Material	Part name	Material
Body	20— 50 : Spheroidal graphite cast iron 65—300 : Cast steel	Packing D	Fushilock
		Cover	Spheroidal graphite cast iron
Ball	20— 50 : Spheroidal graphite cast iron (chromium plated) 65—300 : Carbon steel tube (chromium plated)	Bolt	Stainless steel
		Stud bolt	Stainless steel
Packing A	Fushilock	Nut	Carbon steel
Packing B	Fushilock	Pipe	Carbon steel
Packing C	Fushilock		

Remarks 1. Stainless steel for fluid contact is available on request.
2. Flanged connection is available on request.

Type J102 Ball Joint

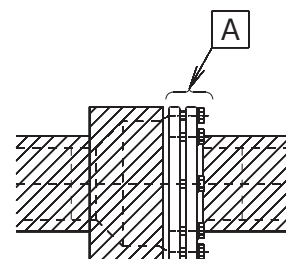
Dimensions and weights

(mm, kg)

Part	Size	20	25	32	40	50	65	80	100	125	150	200	250	300
Setting length	L	145	145	155	170	190	170	190	230	260	280	300	340	390
	L ₁	55	55	55	65	70	80	90	110	120	130	140	160	190
	L ₂	90	90	100	105	120	90	100	120	140	150	160	180	200
	D ₀	110	110	120	135	155	165	180	225	260	275	340	420	475
Screwed	Jls Rc	¾	1	1¼	1½	2	—	—	—	—	—	—	—	—
Weld ends	d ₀	—	—	—	—	—	65	77	101.5	125	150	200	250	297
	d ₁	—	—	—	—	—	58.3	73	95	120.8	143.2	190.9	237.2	283.7
	d ₂	—	—	—	—	—	65.9	78.1	102.3	126.6	151.7	200	250	297.9
	d ₃	—	—	—	—	—	76.3	89.1	114.3	139.8	165.2	216.3	267.4	318.5
Max. inclination	θ°	30	30	30	30	30	25	25	25	25	25	20	16	16
Weight		2.7	2.7	3.2	5.0	7.0	9.1	13	23	31	37	52	96	135

Notice

1. In the event of some leakage, retighten the bolts or nuts from 1/6 to 1 turn more.
Part A shall not be insulated from above point of view.
2. Expansion joint should be used in extent of allowable inclination.
In case it exceeds allowable inclination, please check and modify guide and anchor.



7

Ball Joint